

Squint

1

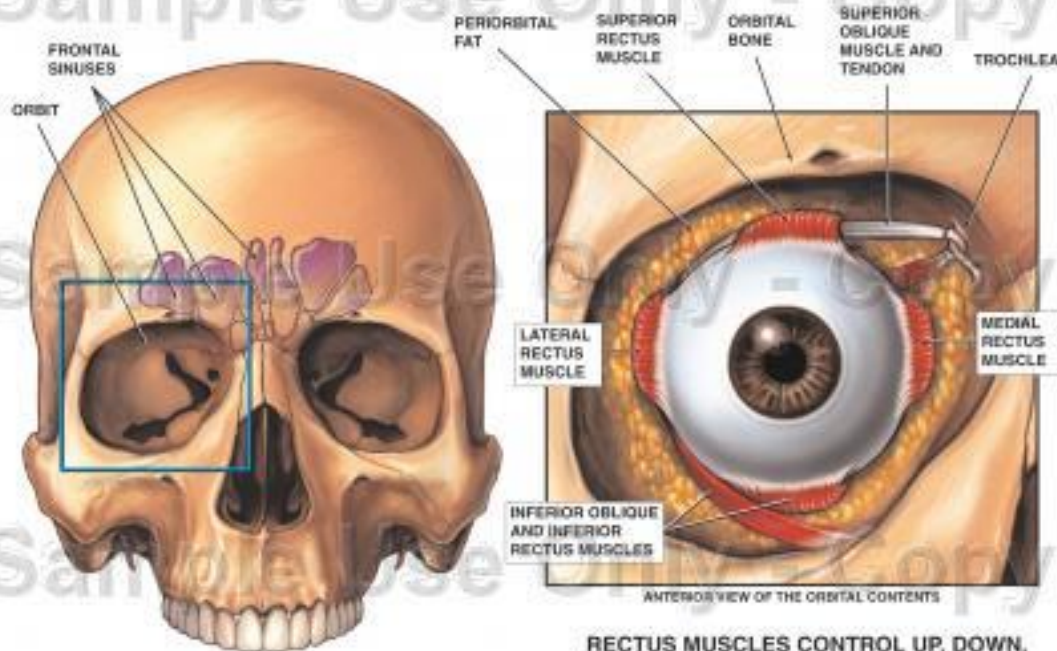
By

Prof. Dr. Ahmad Mostafa

Professor of Ophthalmology

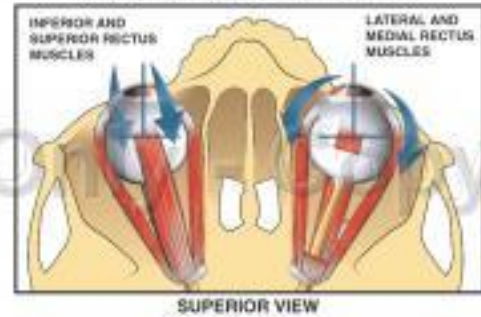
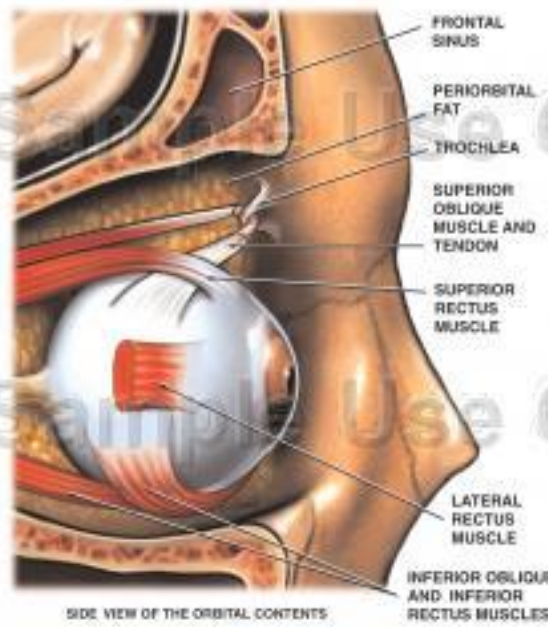
Applied Anatomy

Anatomy and Movement of the Eye

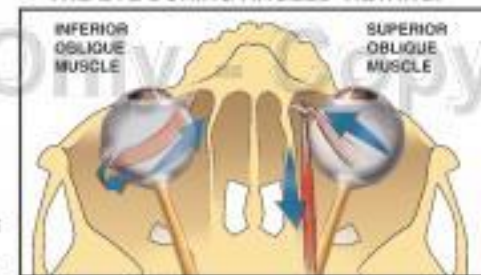


ANTERIOR VIEW OF THE SKULL AND SINUSES

RECTUS MUSCLES CONTROL UP, DOWN, AND SIDE TO SIDE MOVEMENT.



OBLIQUE MUSCLES CONTROL ROTATION OF THE EYE DURING ANGLED VIEWING.



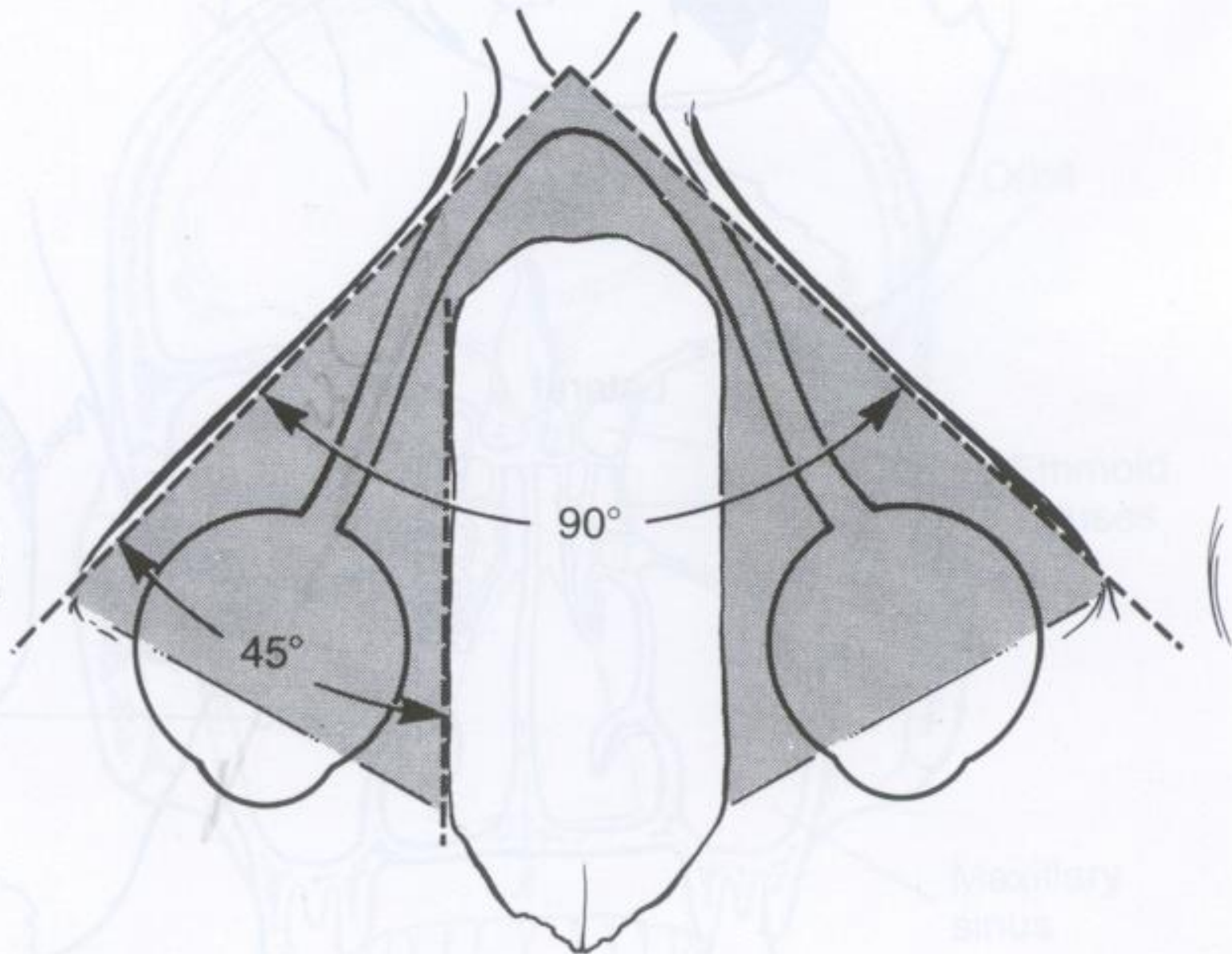
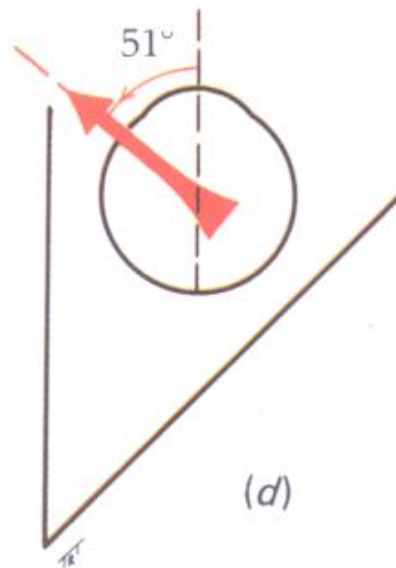
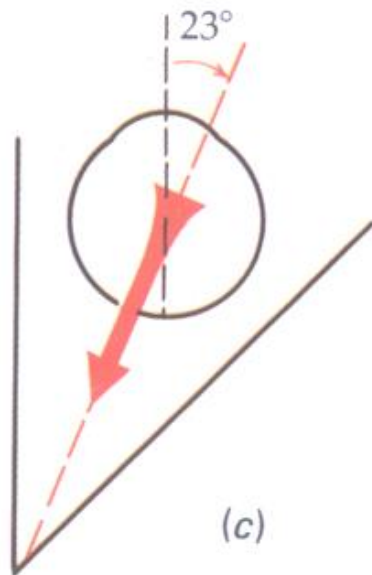
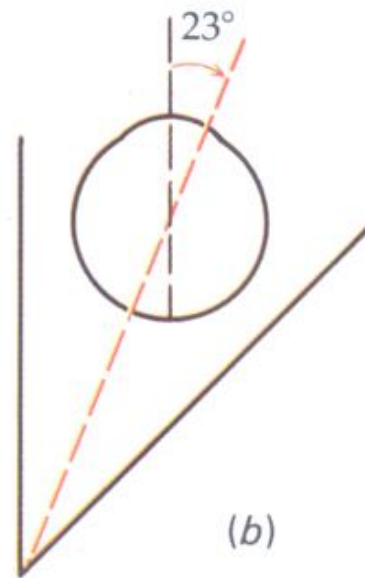
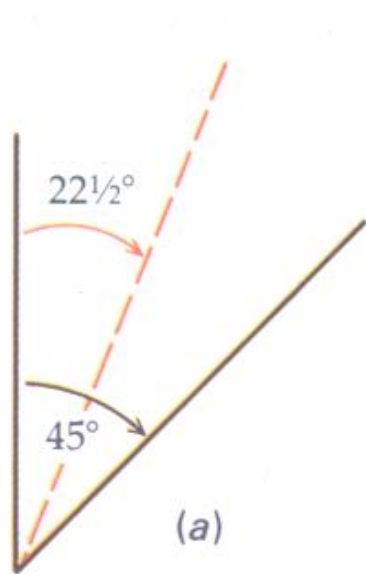
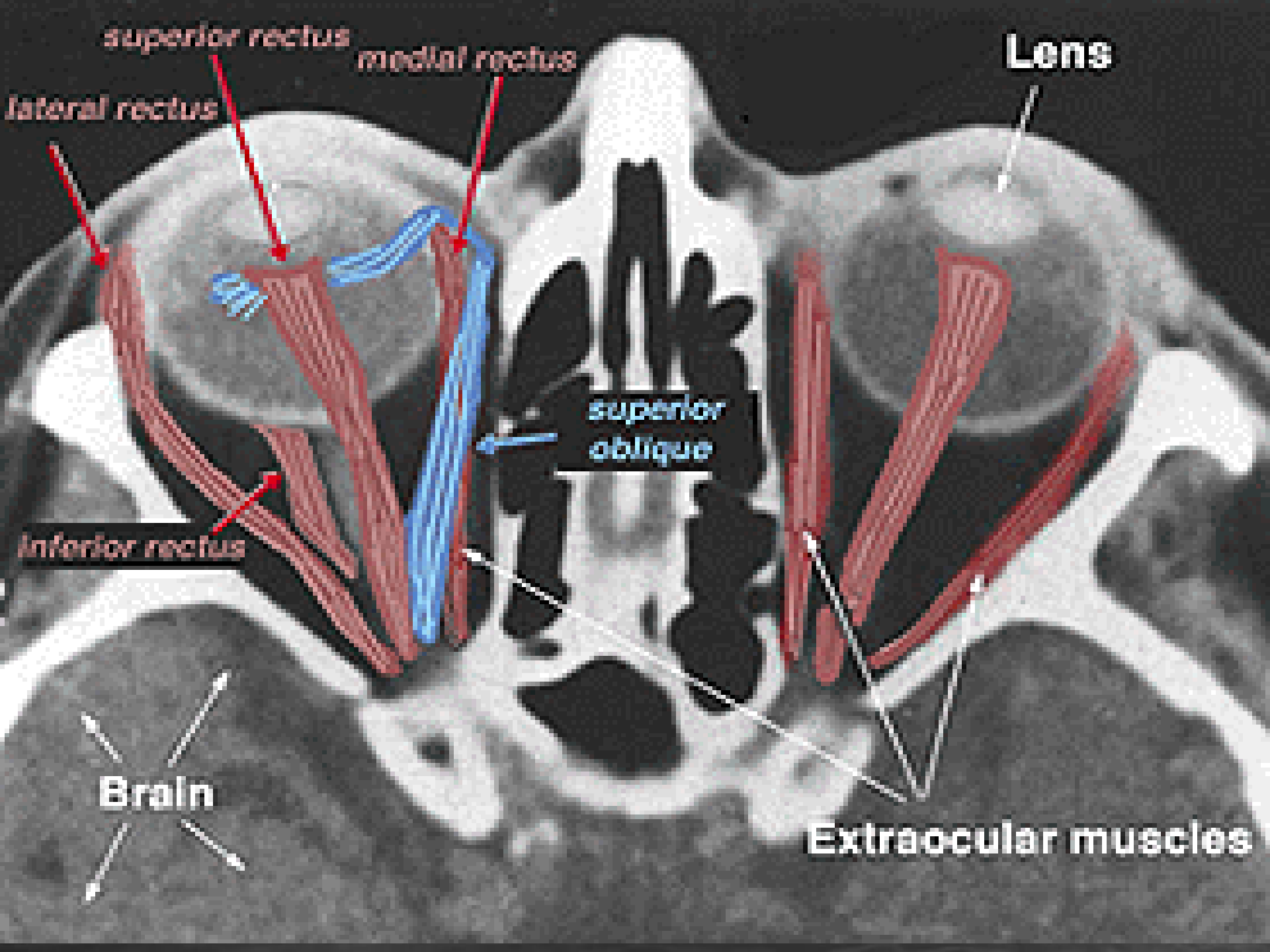


FIGURE 233-2. Angular relationships of the orbit.



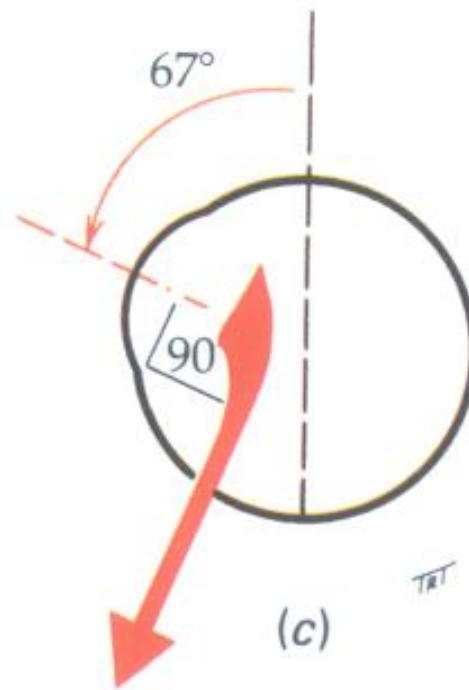




(a)

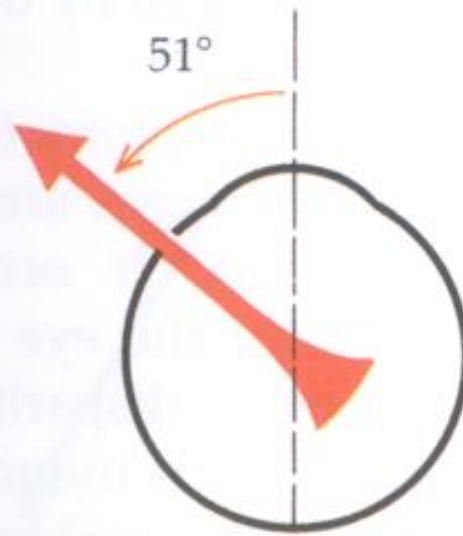


(b)

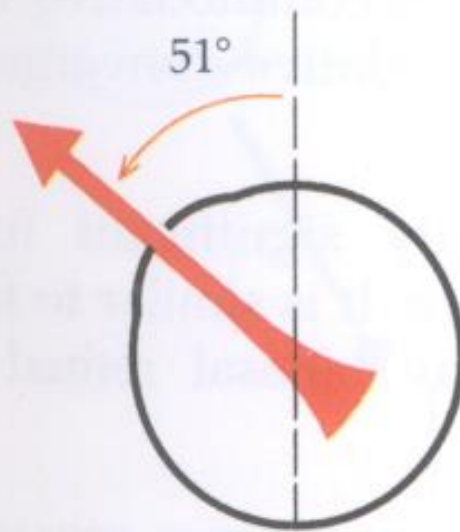


(c)

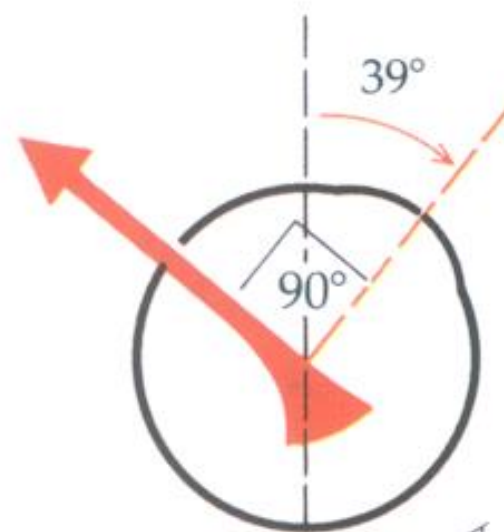
TAT



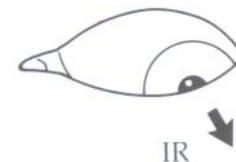
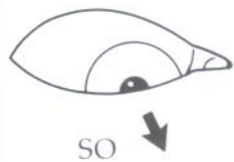
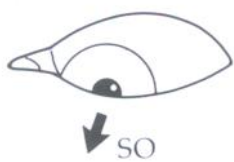
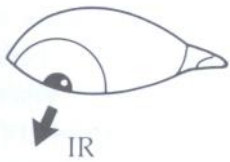
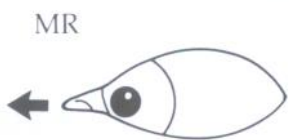
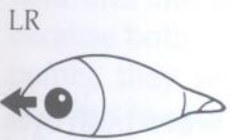
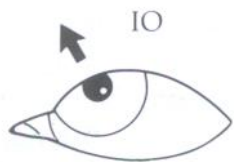
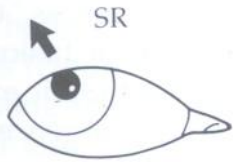
(a)



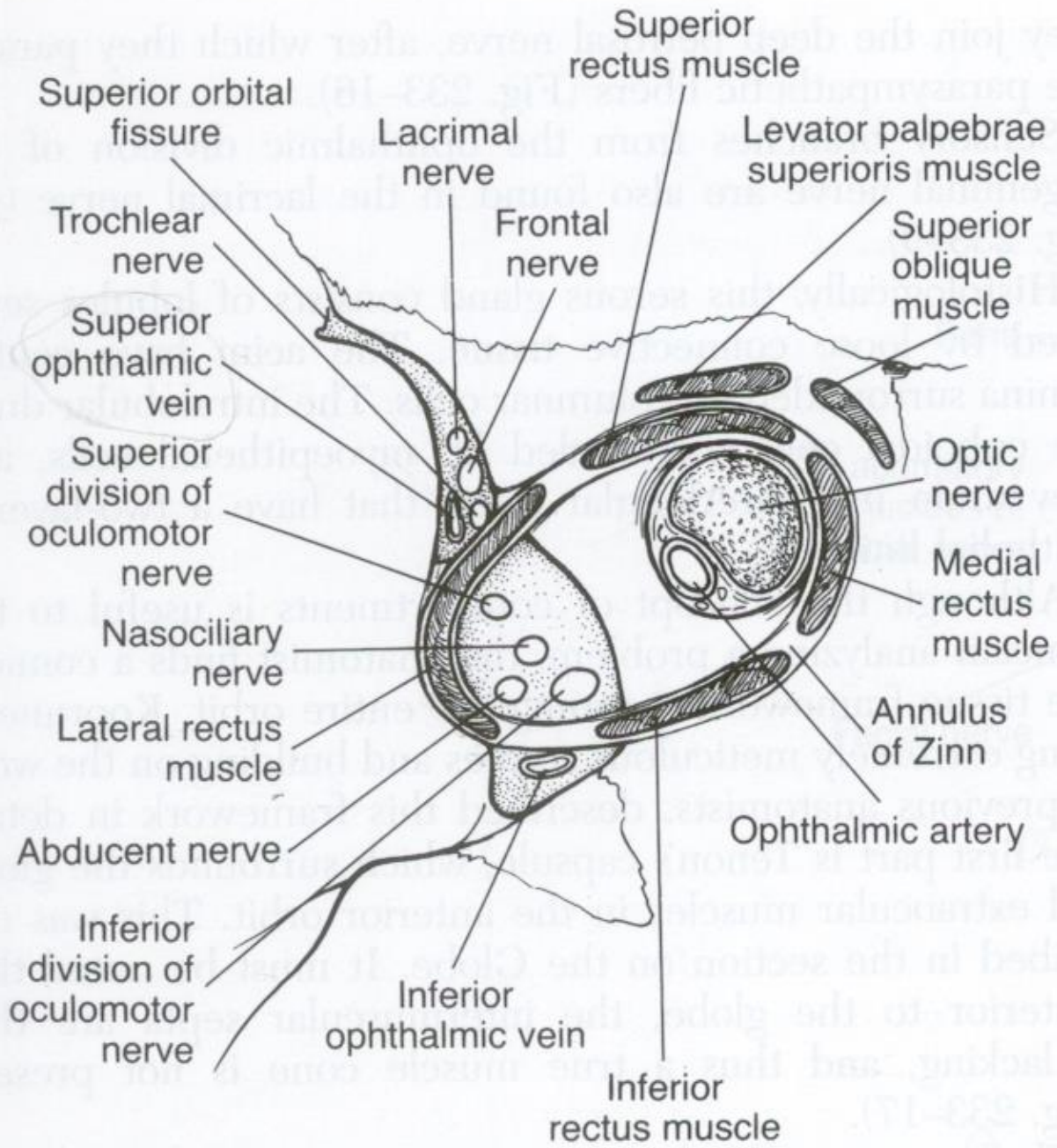
(b)



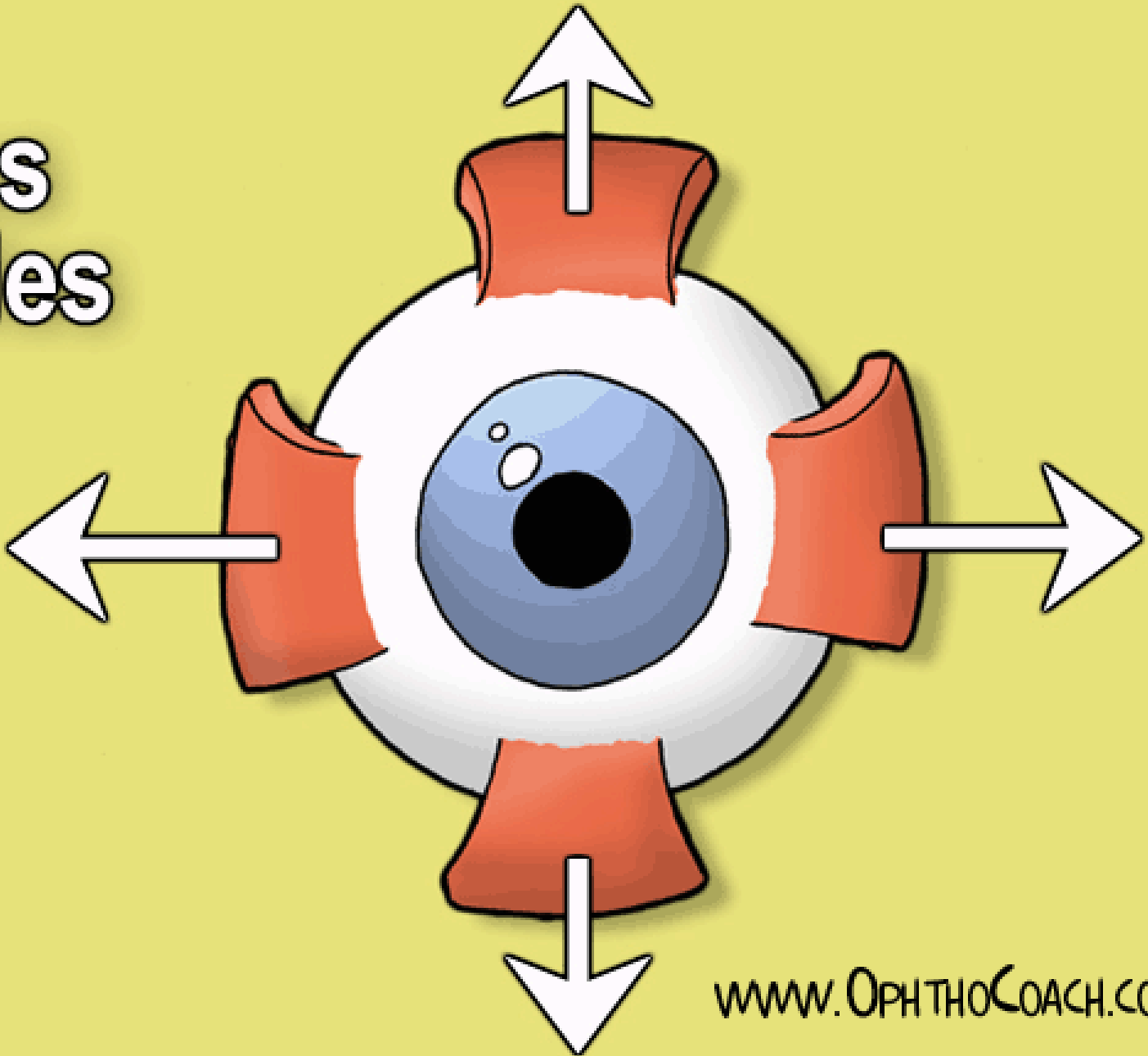
(c)



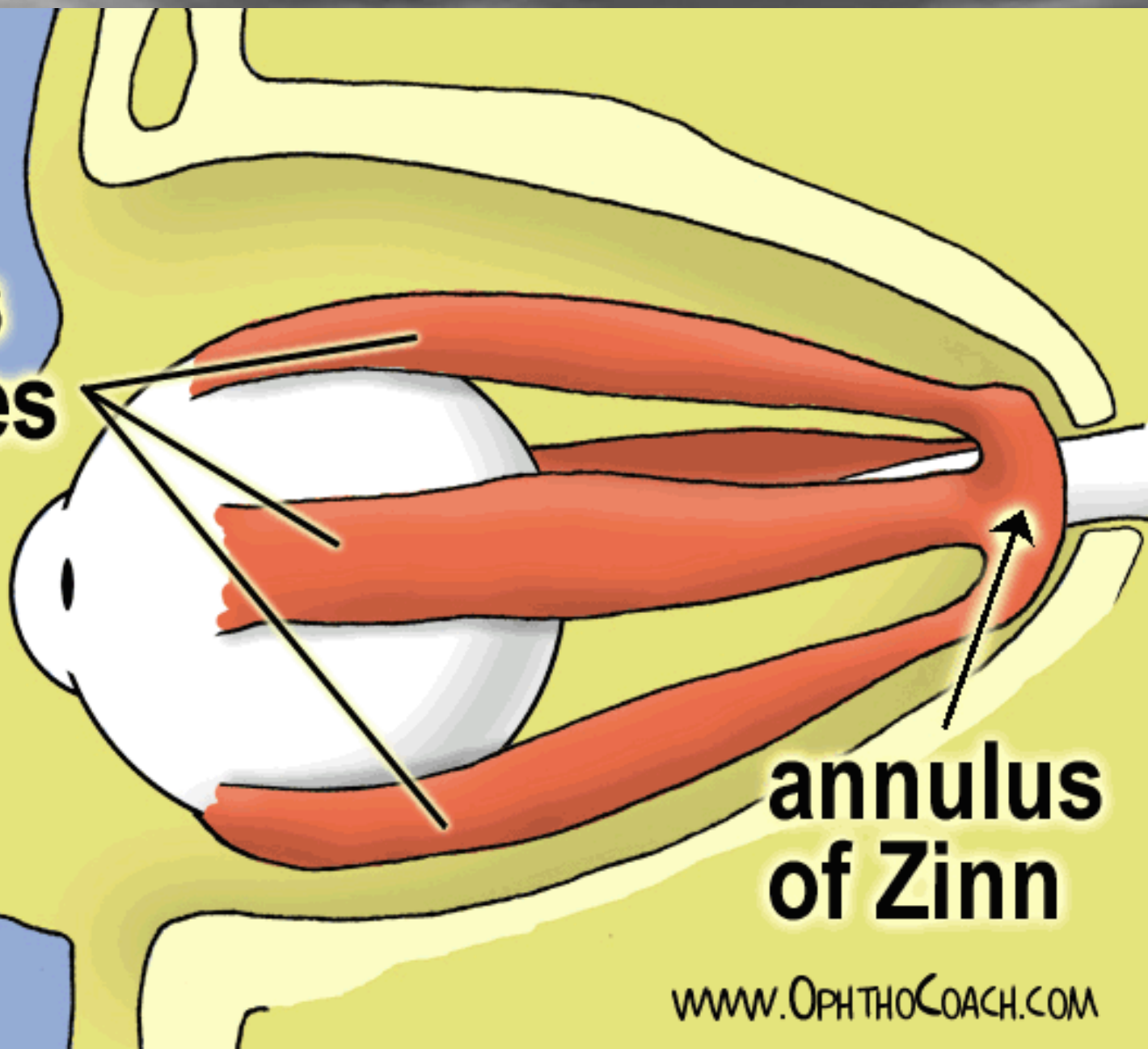
TARRANT



Rectus Muscles

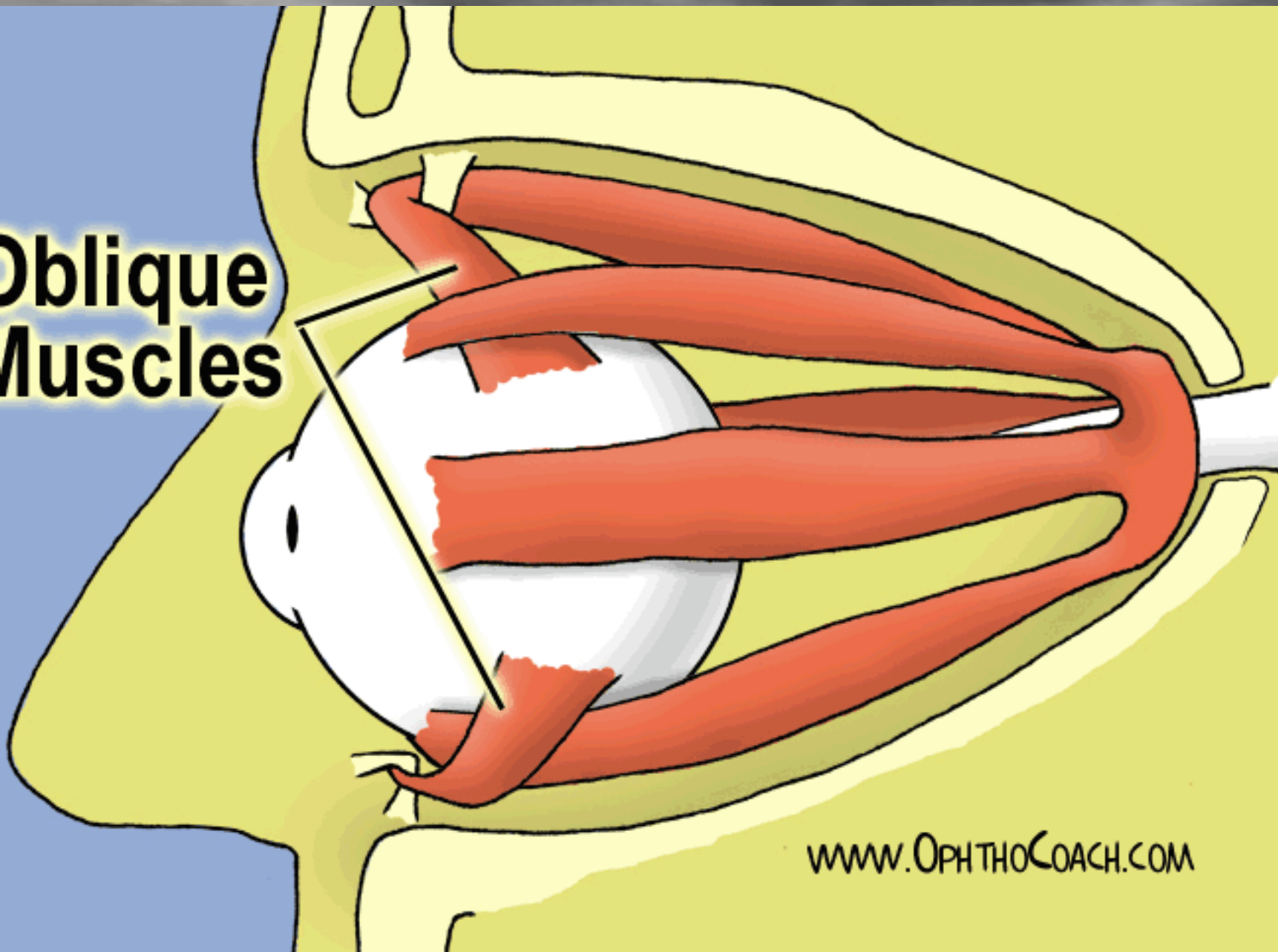


**Rectus
Muscles**



**annulus
of Zinn**

Oblique Muscles



www.OPTHOCOACH.COM

**FRONT OF
LEFT EYE**

